

Autoriteti Portual Durrës

DURRËS PORT AUTHORITY



Port of today and Vision of tomorrow.

Albania's Durrës – Porto Romano port complex



A Retrospective Through the Years

- Durrës has a **3,000-year history**, and the life of the city over the centuries has been closely intertwined with the port built alongside it.
- It is among the most esteemed and most frequently mentioned cities by ancient, medieval, and modern authors—geographers, historians, poets, philosophers, playwrights, archaeologists—as well as by numerous visitors and travelers.
- Originally inhabited by the Illyrian Taulantii, the city was first known as **Epidamnus** and **Dyrrachium**, later acquiring its present Albanian name, **Durrës**.
- Despite invasions, wars, and earthquakes that have affected it, both Durrës and its port have repeatedly been rebuilt in the same location.
- After three millennia of uninterrupted existence, Durrës is regarded as the **oldest continuously inhabited city on the eastern Adriatic coast**, from Vlorë to Trieste, that continues to endure.
- After the 1950s, the port of Durres developed rapidly. Merchant fleet vessels sailing from Durrës to the ports of the Indian Ocean and the Atlantic transported various goods processed at the port.

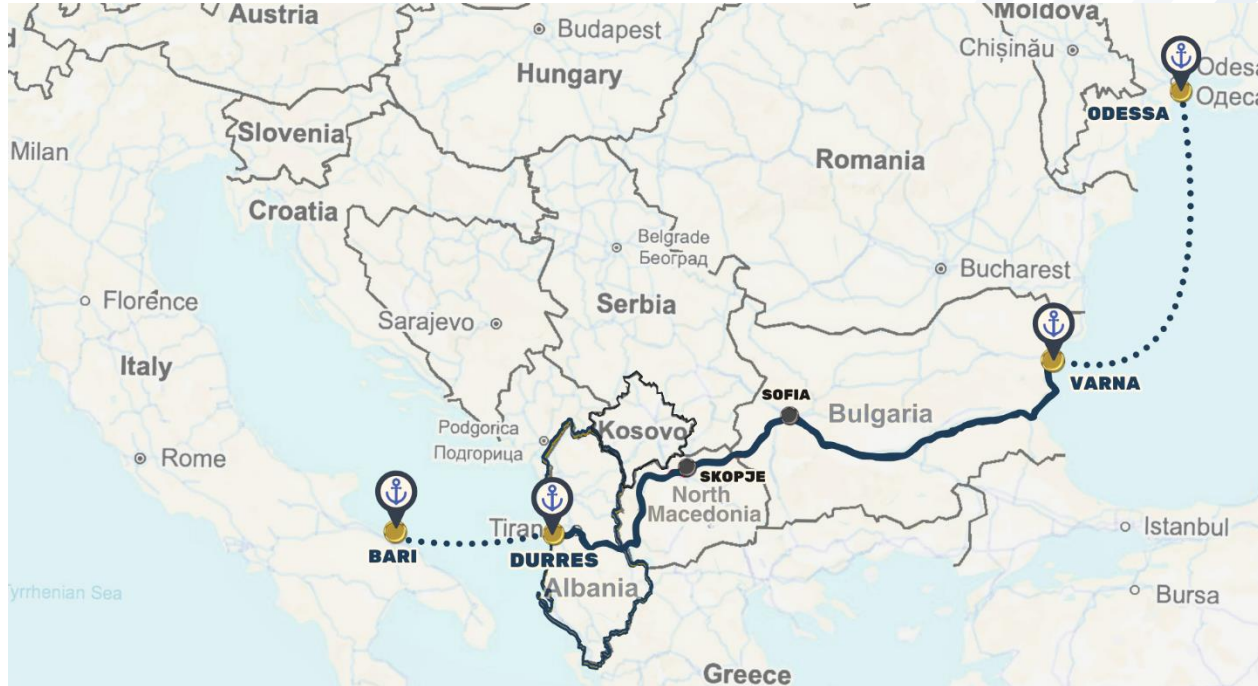


Berlin 2026

GENERAL INFORMATION

CONNECTIVITY

THE PORT OF DURRES IS THE DOOR TO THE PAN-EUROPEAN CORRIDOR VIII CONNECTING THE ADRIATIC SEA WITH THE BLACK SEA



GENERAL INFORMATION

CONNECTIVITY

THE PORT OF DURRES IS PART OF THE PAN-EUROPEAN BLUE CORRIDOR CONNECTING PORTS OF THE ADRIATIC AND JONIAN SEA

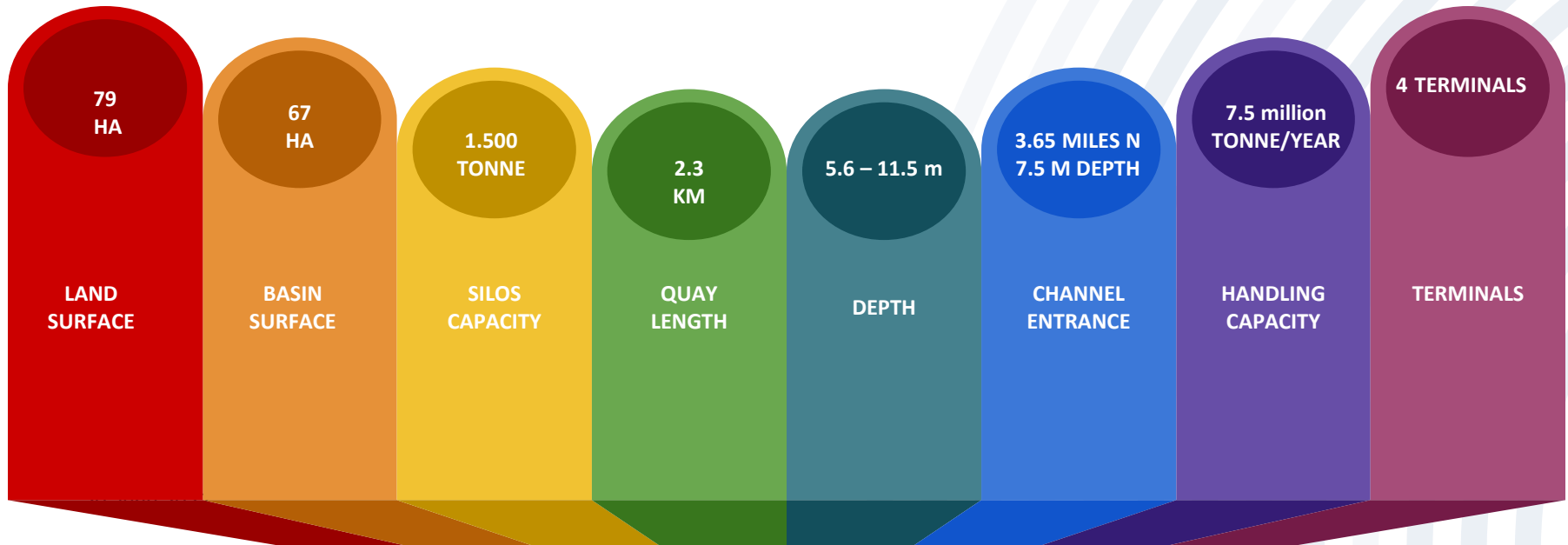


GENERAL INFORMATION DURRES EXISTING PORT IN FIGURES

ACCOUNTING FOR 95% OF ALBANIA'S MARITIME TRADE

HANDLES ALL TYPE OF CARGO

OPERATES 24 HOURS/DAY- 365 DAYS/YEAR



TERMINALS

CONTAINER TERMINAL

QUAY LENGTH	330 ML
QUAY DEPTH	8.6 M – 10.00 M
YARD SURFACE	74.000 M2
MHC	4 UNITS, 100-120 TONNE



REEFER PLUGS	200 UNIT
STORAGE CAPACITY	3.000 TEU
HANDLING CAPACITY	250.000 TEU/YEAR



TERMINALS

GENERAL GOODS TERMINAL

QUAY LENGTH	725 ML
QUAY DEPTH	7.5 M – 9.5 M
YARD SURFACE	72.760 M2
MHC	1 UNITS & 8 others Ganz + Takraf



REEFER PLUGS	-
STORAGE CAPACITY	Open Space/Yard Distribution
HANDLING CAPACITY	350.000 tones of goods 2025



Berlin 2026



TERMINALS

FERRY TERMINAL

QUAY LENGTH	580 ML
QUAY DEPTH	8.5 M – 10.00 M
TERMINAL BUILDING	5.400 M2
YARD SURFACE	87.000 M2
HANDLING CAPACITY	10.000 PASSENGERS/DAY (in/out)



Berlin 2026



TERMINALS

BULK CARGO TERMINAL

QUAY LENGTH	422 ML
QUAY DEPTH	6.5 M - 11.5 M
YARD SURFACE	135.000 M ²
GANTRY CRANES	4 UNITS 15-27 TON



Berlin 2026



A Window to the Future

A scope...not only a Vision

New Porto Romano Masterplan



Durrës Yachts & Marina Masterplan



Project background - General

- Government of Albania's strategy on maritime transport and port infrastructure requires the relocation of existing port activities to a new port: 'Port of Durrës - Porto Romano'



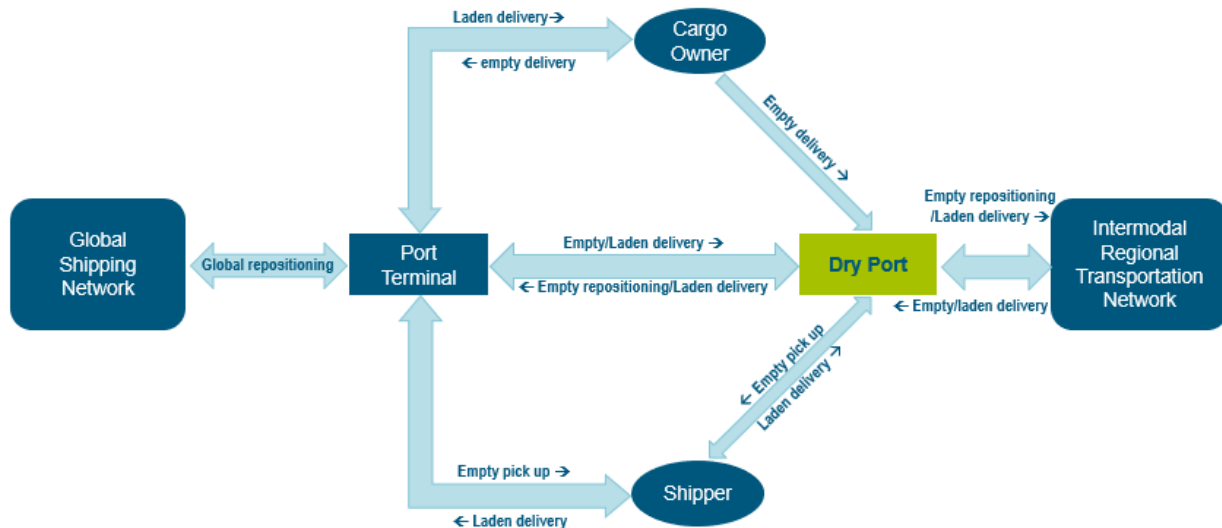
Connectivity - Potential role and position of Port of Durrës - Porto Romano within the wider regional transport network

- Improved hinterland connectivity could bring more cargo to Port of Durrës - Porto Romano
- Better connecting the economy of the Western Balkans, within the region and with the **EU core network**
- Of specific interest are:
 1. **Corridor no.8** (Port of Durrës - Porto Romano to Skopje & Bulgaria), and
 2. Opening the Port of Durrës - **Porto Romano - Kosovo / Prishtina** Corridor



Current Pan-European corridors & Porto Romano-Kosovo Corridor

The development of an intermodal logistics hub in Kosova and North Macedonia: extending the Gateway function of Porto Romano deep into the region

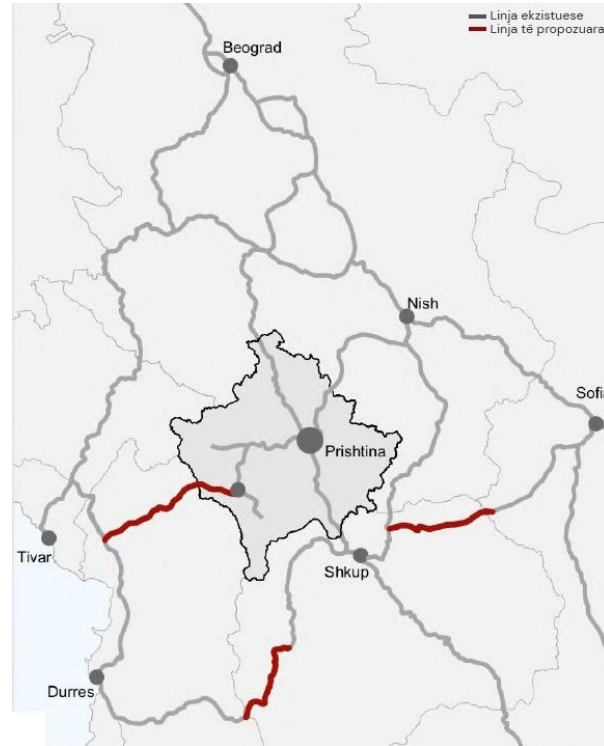


The Concept of a Dry Port: a means to improve the logistic services by 'de-stressing' (maritime) ports, providing ancillary services, infrastructure support, and a transit hub for intermodal services

The development of an intermodal logistics hub in Kosova and North Macedonia: extending the Gateway function of Porto Romano deep into the region



The development of an intermodal logistics hub in Kosova and North Macedonia: extending the Gateway function of Porto Romano deep into the region



New Porto Romano project development

Overall port masterplan

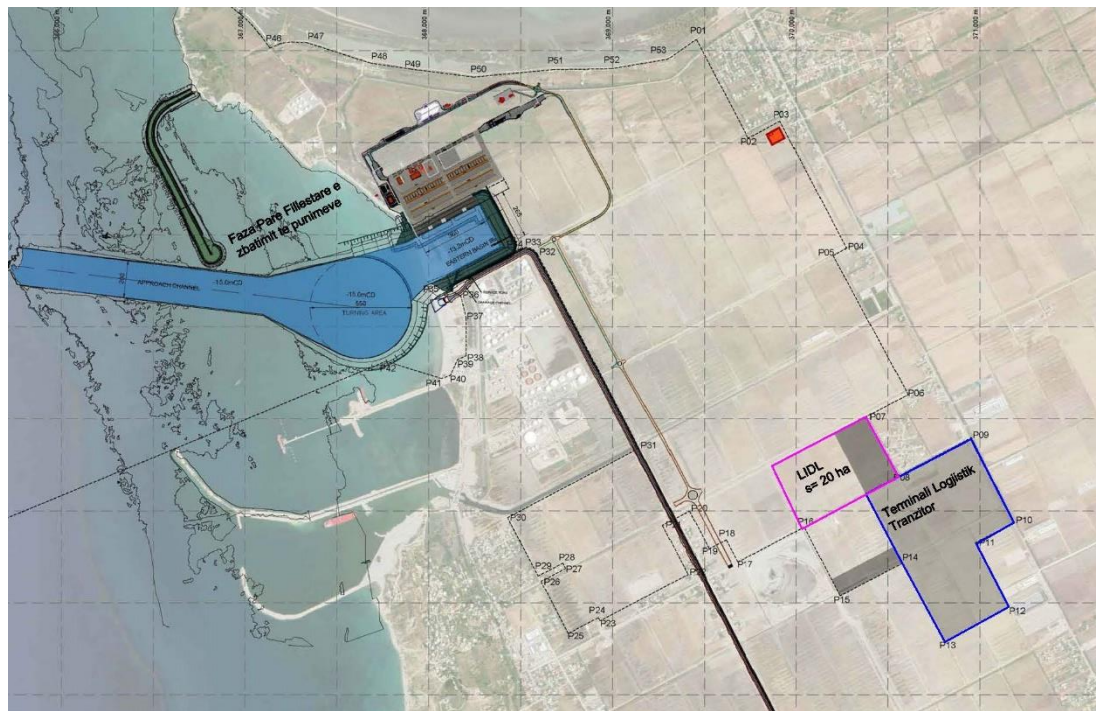
Key data:

- 30+ berths for seagoing vessels
- 400+ ha terminal area
- Annual port capacity
 - > 2 Million TEU (containers)
 - > 50 Million ton (other cargoes)
 - > 1 Million passengers
- Good hinterland connections
- Independent naval base
- Logistic park & economic zone



'The integrated Port of Durrës - Porto Romano will become the centre of logistics and port-related commercial activities in Albania and has the potential to become the gateway to the Western Balkans. The development of the port offers a great opportunity for Albania in terms of national and regional market connectivity and socio-economic growth.'

Not just a port — an national & international logistics hub



The new Master Plan for the Commercial Port in Porto Romano creates opportunities for interaction with global companies operating across the logistics supply chain, offering sustainable and profitable partnerships.

It will strengthen regional connectivity, positioning Durrës as a key player in the logistics market and related sectors.

The project will also generate new employment opportunities and support economic & professional growth for Durrës and Albania.

The Durrës Port Authority has entered into a cooperation agreement with one of the leading global logistics operators in food processing and retail, Schwarz Group – Lidl International.

Looking Forward, Anchored in History.



Thank you for your kind attention



Q & A ?